

## 悬臂系统



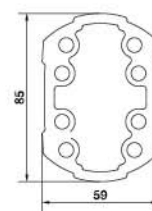
用于轻型/中型负载的铝型材悬臂系统



支承型材59\*85mm

材质：铝型材

订货号：6085.025 ( 250mm )  
6085.050 ( 500mm )  
6085.100 ( 1000mm )  
6085.200 ( 2000mm )



支承型材40型

材质：钢

订货号：4001.025 ( 250mm )  
4001.050 ( 500mm )  
4001.100 ( 1000mm )



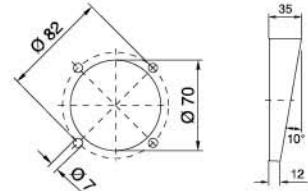
# 悬臂系统60-80系列



倾角转接器10° 用于支托臂连接，直径130mm

材质：铸铝

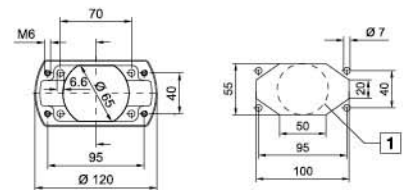
订货号：6085.400



倾角转接器10° 用于支托臂连接 120 × 65mm

材质：铸铝

订货号：6085.440

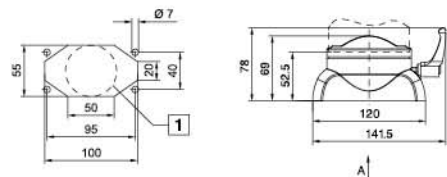


耦合件，用于支托臂连接 120 × 65mm

材质：铸铝

旋转角度：320°

订货号：6085.340

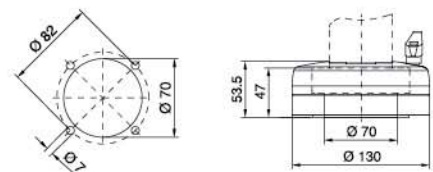


耦合件，用于支托臂连接，直径 130mm

材质：铸铝

旋转角度：320°

订货号：6085.300



## 悬臂系统60-80系列

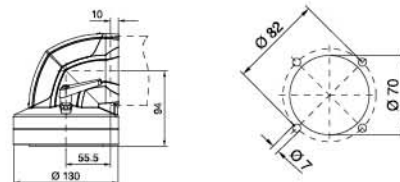


90° 角向接合器，用于支托臂连接直径130mm

材质：铸铝

旋转角度：320°

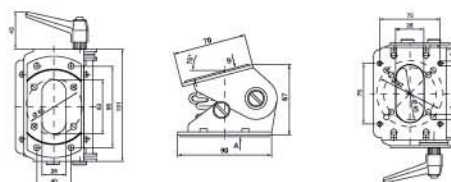
订货号：6085.380



倾角转接器+100° /-60° 用于支托臂连接120×65mm

材质：铁

订货号：6085.460

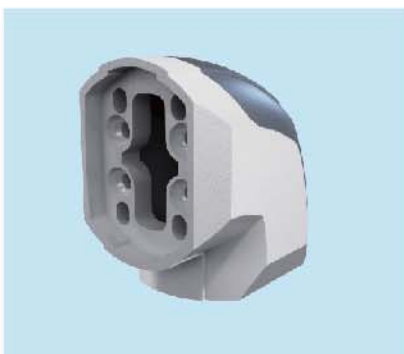
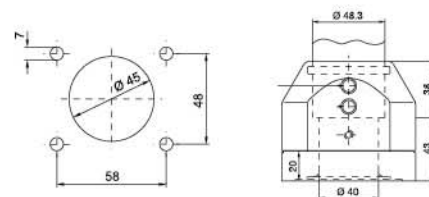


耦合件40型，用于支托臂连接90×71mm

材质：铸铝

旋转角度：320°

订货号：4001.130




角固定件90°

材质：铸铝

订货号：6085.600



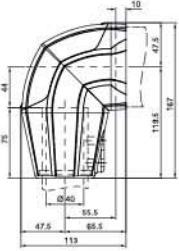
# 悬臂系统60-80系列



**角转接器90° 用于将支托臂60型组合到40型**

材质：铸铝

订货号：6085.640






**中间铰接器**

材质：铸铝

旋转角度：320°

订货号：6085.620



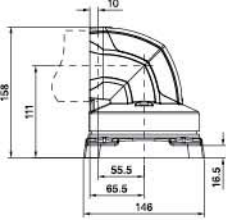
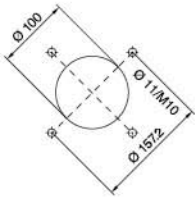


**顶装式铰接器，水平出线口**

材质：铸铝

旋转角度：320°

订货号：6085.700



**顶装式铰接器，垂直出线口**

材质：铸铝

旋转角度：320°

订货号：6085.720



# 悬臂系统60-80系列

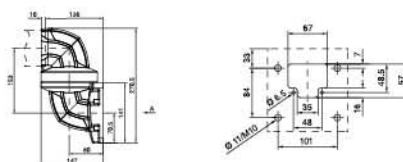


壁装式铰接器60型，水平出线口

材质：铸铝

旋转角度：320°

订货号：6085.740

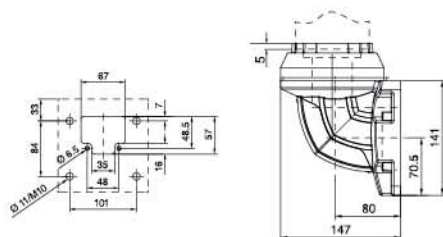


壁装式铰接器60型，垂直出线口

材质：铸铝

旋转角度：320°

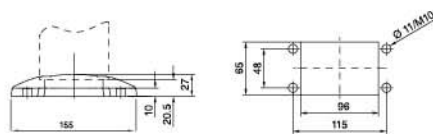
订货号：6085.760



小型墙壁/底板固定件60型

材质：铸铝

订货号：6085.820



用于西门子Pro-Panel

材质：铸铝

订货号：6085.500

